

# Mastiff 400

## SWING GATE OPENERS



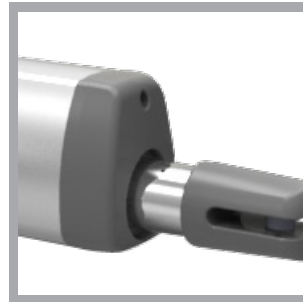
Die-cast aluminum enhance structure strength



Easy manual release operating from the top by means of a personalized key



Built-in Limit Switch device for intelligent stop in opening and closing



Special surface treatment enhance hardness and stainless inner tube for Lasting and durability



# Mastiff 400

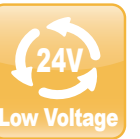
## SWING GATE OPENERS

### Mastiff 400

- Die-cast Aluminum motor cover enhance structure strength
- Aluminum extrusion external tube with special anode surface treatment provide great durability
- Built-in Limit Switch is optional adjustable in opening and closing
- Built-in Magnetic Encoder is optional for intelligent calculation of motor movement

### 24 Vdc

- 24Vdc electromechanical heavy duty 5540 gear motor
- Worm gear provides durability and silence in motor operation
- Easy manual release device with personalized key in case of power failure, water proof cover design ensure complete and lasting protection



# Mastiff 400

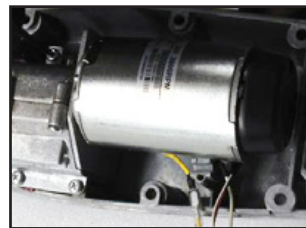
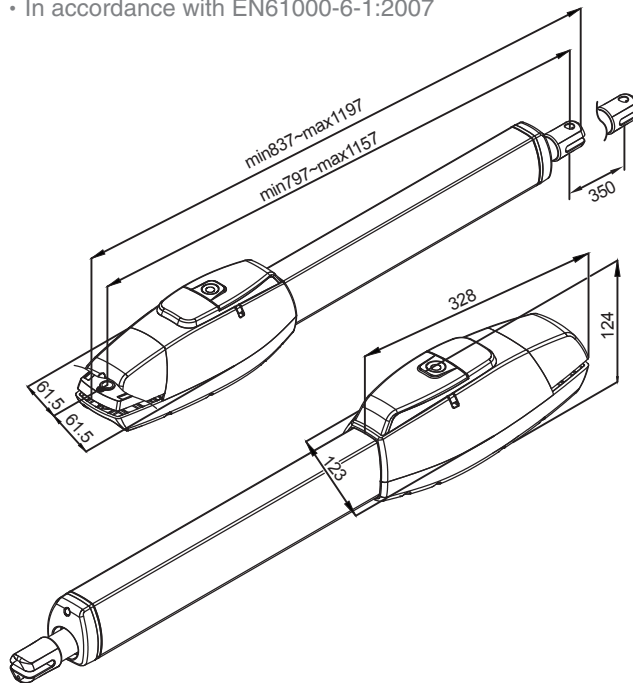
## SWING GATE OPENERS

### Mastiff 400

24Vdc Low Voltage Heavy Duty Electromechanical gear motor provides safety installation and powerful operation. For up to 350kg/4m per gate leaf.

#### Features:

- Die-cast aluminum motor cover provide great resistance to critical environment
- Copper worm gear is optional for extremely heavy duty application
- Obstacle detection and crush prevention
- Easy and Fast set up of installation
- A personalized key is used for manual release device with elegant and water proof cover design
- Opening up to 120o for most circumstances
- Single or dual gate install optional
- Back-Up battery optional
- Encoder movement control
- Built-in Limit Switch device is optional for advance application
- Pedestrian mode
- In accordance with EN61000-6-1:2007



Encoder Technology  
Intelligent calculate  
of motor operating distance  
give soft starting and closing

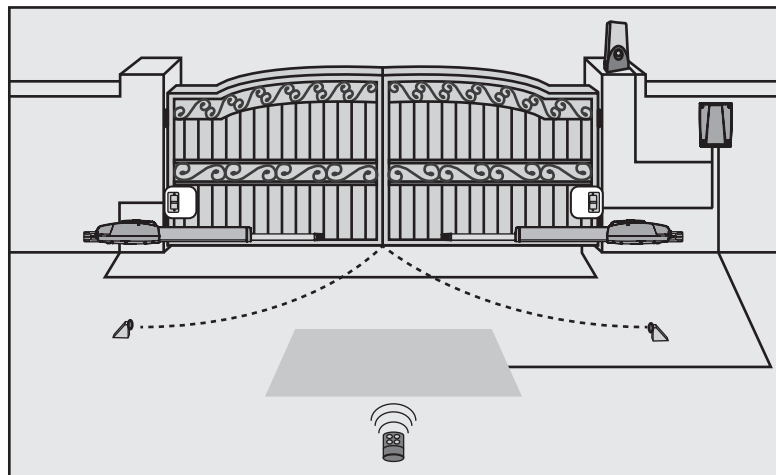


Limit Switch  
Adjustable in opening  
and closing position  
give easy installation and  
application



#### Technical Features

	Mastiff 400
Power supply	230Vac (50~60Hz)
Motor Power supply	24Vdc
Max. gate weight	350kg
Max. gate Length	4m
Peak Thrust	3500N
Operation Stroke	350mm
Piston extension /retraction speed	25.5±2mm/sec
Typical gate opening time	<14 sec
Duty cycle	20%
Protection grade(IP)	IP44
Working Temperature	-20oC~50 oC



The above graph represented installation included Dual motor 、 Control System 、 Photocell 、 Flashing Light and transmitters. Terrier swing gate operator is qualified by EN 61000-6-1: 2007.



#### Accessories



#### CB Series Control System

Smart control with intelligent functions

- Power input 110AV/230AV are available for optional
- Two back-up batteries support for power failure
- Build-in radio receiver for matching transmitters
- Over-current design for European safety regulation
- Elegant design and easy step installation
- Coordinate with CB16/CB20



**CB16**  
Economic Version



**CB20**  
Advance Version  
With Encoder Technology



#### TM2 Transmitter

2-Channel Transmitter

- Two-channel transmitter with programed features
- Up to 50m transmitting distance
- With rolling code of 433MHz



#### TM3 Transmitter

4-Channel Remote

- Four-channel transmitter with programed features
- Up to 50m transmitting distance
- With rolling code of 433MHz



#### RB1 Receiver Box

External Receiver System

- Coordinate up to 200 transmitters
- Rolling code 433MHz receiver box
- AC/DC 12-24C application



#### PF2 Flashing Light

Flashing Light powered with 24Vdc

- Unique inner-shape design for maximum light efficiency
- Halogen bulb usage provide excellent illumination
- Vertical and Horizontal install are available



#### PS1 Metal Stopper

Metal Stopper with rubber impact reduce

- 100% metal material with great durability
- Impact reduce rubber keep silence movement



#### H2 Photocell

Photocell of receiver/transmitter

- Safety device for up to 30m application
- Power input of AC/DC 12 ~ 24V
- Waterproof resistance design for outdoor environment