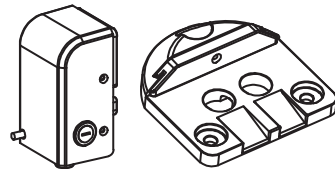


PEL-1 Electric Latch and PS-1 Stopper Guide

SPECIFICATION:

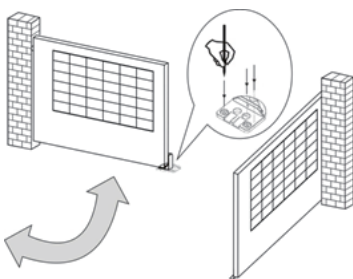
Application	For locking the gate.
Power Supply	24Vdc
Operating Temperature	-20°C~+50°C
Operating Current	5A
Dimension	61mm * 55mm * 120mm



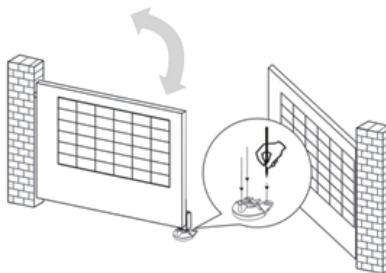
1. Stopper:

- 1). Before installing the stopper, please make sure the gates are in close positions and the surface to be installed is flat.
- 2). Place the stopper on the ground using the bottom as reference, and mark the 3 drilling points.

For the gate opened inward.



For the gate opened outward.



Note: If the gate is opened outward, place the stopper in opposite direction.

- 3). Drill the 3 marked points, and then securely attach the stopper to the ground with screws and washers.

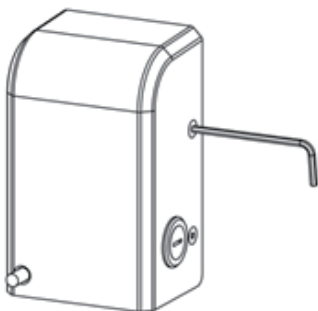


2. Electric Latch:

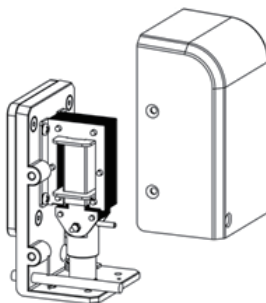
(If the gate is opened outward)

- 1). If the gate is opened outward, please change the spring inside and screw it in the different place.

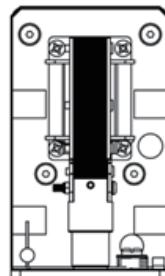
Unscrew the screws.

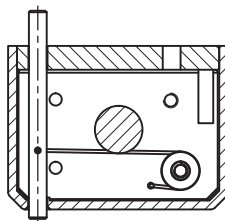
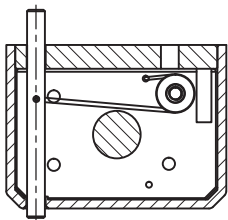


Take the casing off.



The location of the spring.





Change the spring and screw it in the different place.

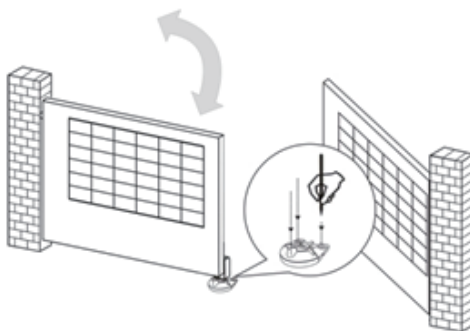
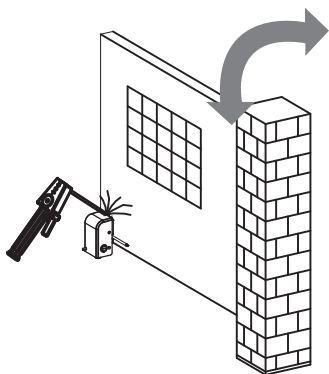
(Installation)

2). Weld the back plate of the electric latch to the surface on the master gate.

Please avoid melting the wires by the heat of the fixed plate.

For the gate opened inward.

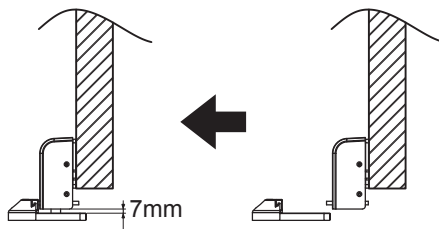
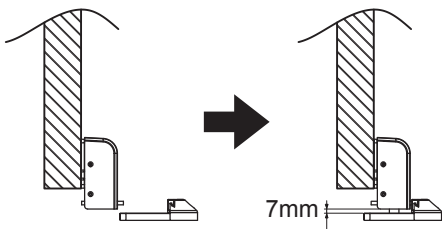
For the gate opened Outward.



3). The gap between the bottom of electric latch and the stopper should be less than 7mm.

For the gate opened inward.

For the gate opened Outward.



4). Connect the wires of the electric latch to the terminal LAT(+) and LAT(-) on the PCB.

POWERTECH

Powertech Automation Inc.

Address: 10F., No.100-1, Minquan Rd., Xindian Dist., New Taipei City 231, Taiwan (R.O.C.)

TEL: +886 2 86675222 FAX: +886 2 86675223 Email: sales@powertech.tw

www.powertech-automation.com

